



Witney Flood
Mitigation Group

Witney Flood Mitigation Group

An overview of WFMG, Actions and Progress to Date
WODC Waterways Day, 18 November 2022



Witney Flood
Mitigation Group

Who Are We?

- **Formation – January 2021, following the 2020 Christmas floods**
- **Active Members**
 - William Wareing
 - Tony Stark
 - Kay Jerred
 - Mike French
 - Duncan Wood
 - Keith Jameson
- **Passive Members**
 - >50 households and businesses at risk

Our Aims



Witney Flood
Mitigation Group

- **Joined Up thinking and Teamwork**
 - With EA, WODC, WTC, OCC, Thames Water
 - Engage and support those at risk of flooding
 - Represent silent voices
- **Watercourse Maintenance**
 - Looking after what we have already got - removal of silt, fallen trees, obstructions
 - EA – Main River
 - WODC – Ordinary watercourses
 - Riparian Owners - throughout
- **Gauge Boards at more Key Locations**
- **Greater Channel Capacity through the Town**
 - Town Bridge Reconstruction
 - Langel Common Footpath
- **An Attenuation Scheme for Witney**
 - Between Worsham and Crawley
 - Hailey Road Drain

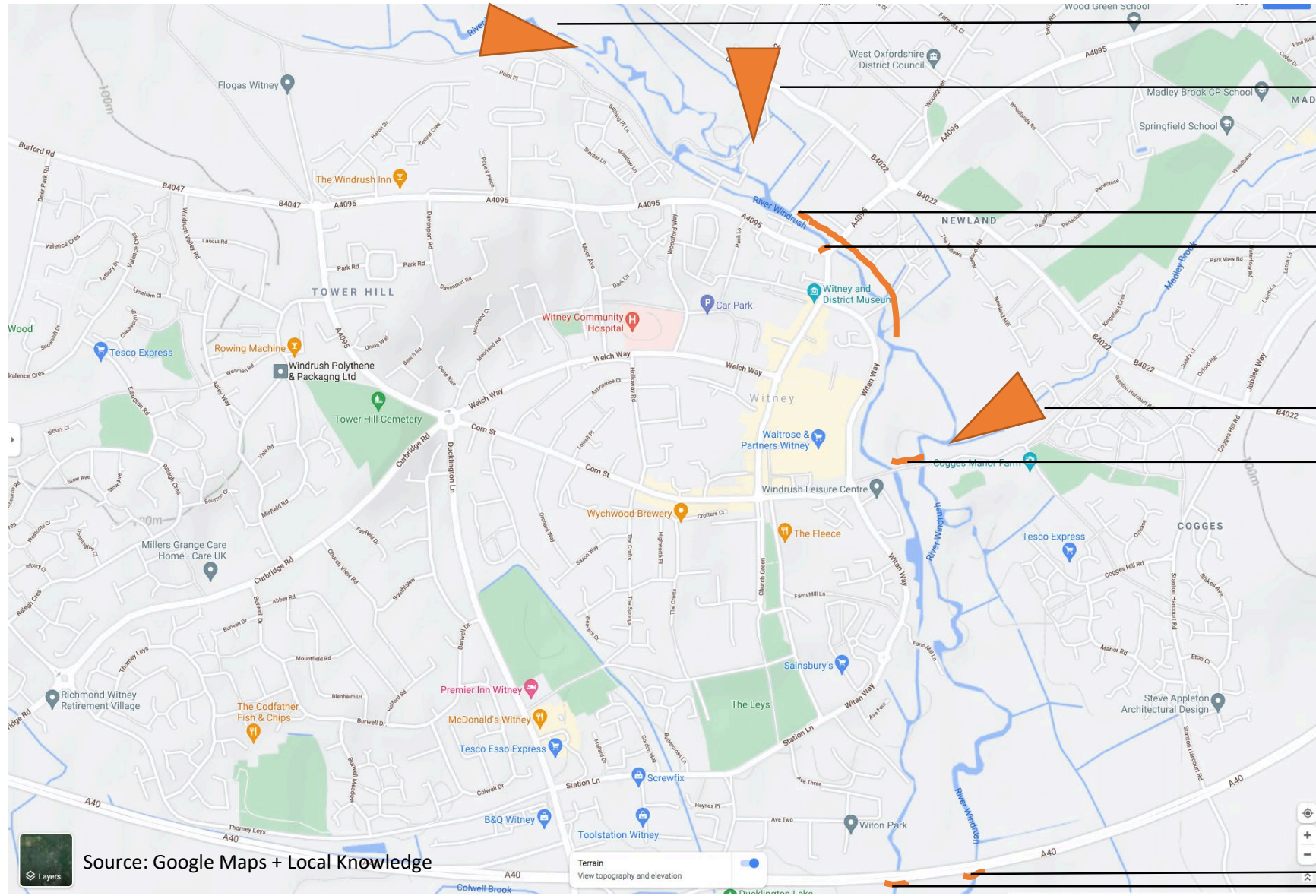


Witney Flood
Mitigation Group

Witneys Unique Challenges

- **Lack of channel maintenance, especially silt removal**
- **Development on floodplain**
- **Constant attempts to build/extend developments**
- **Awareness**
- **At risk locations**

Witney's Unique Situation



Bathing Place

Eastfield Road/Hailey Road

Constrained Single Channel

Town Bridge

Madley Brook

Langel Common

Old Railway Embankment

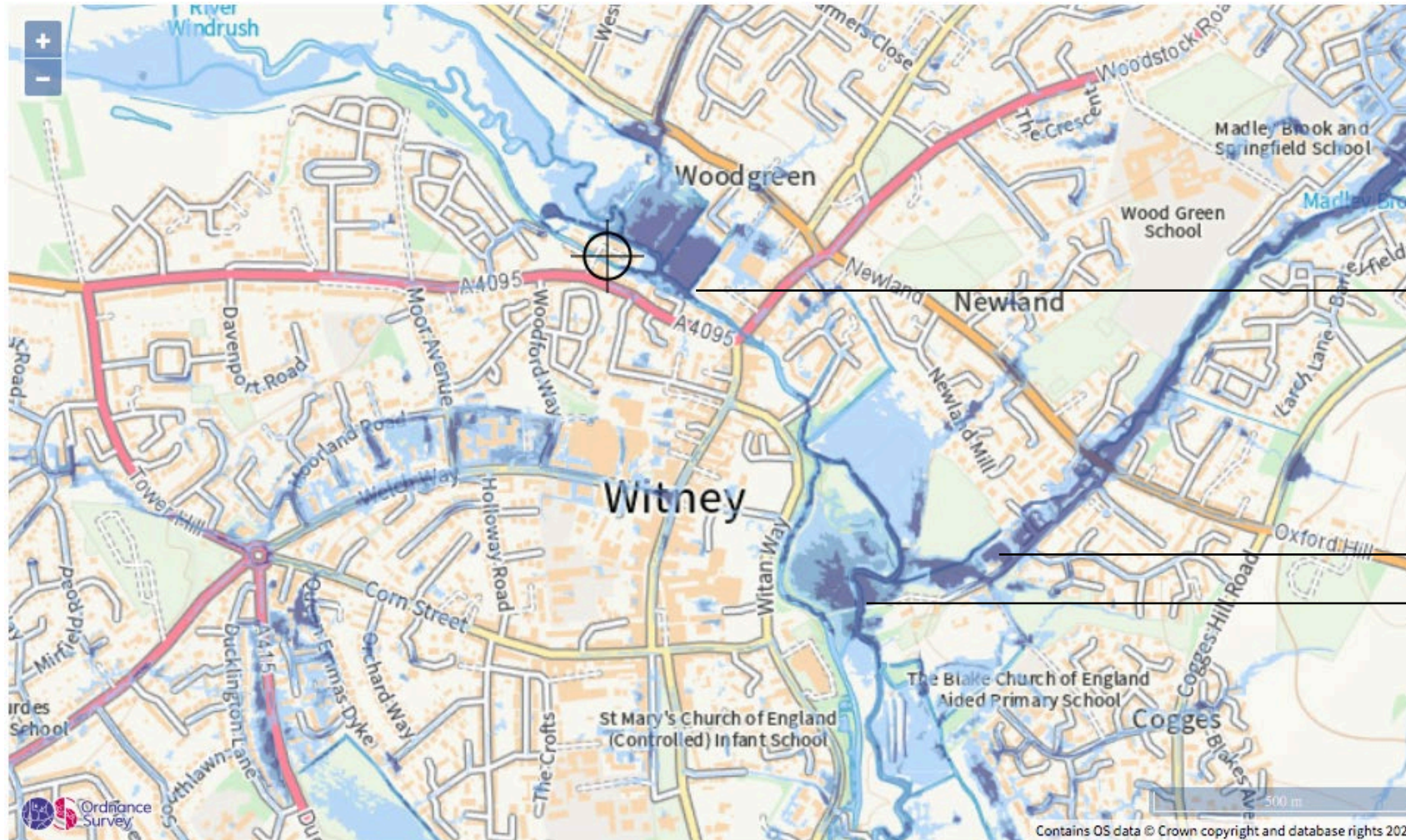
Source: Google Maps + Local Knowledge

Terrain
View topography and elevation

Constrictions on EA Flood Map



Witney Flood
Mitigation Group



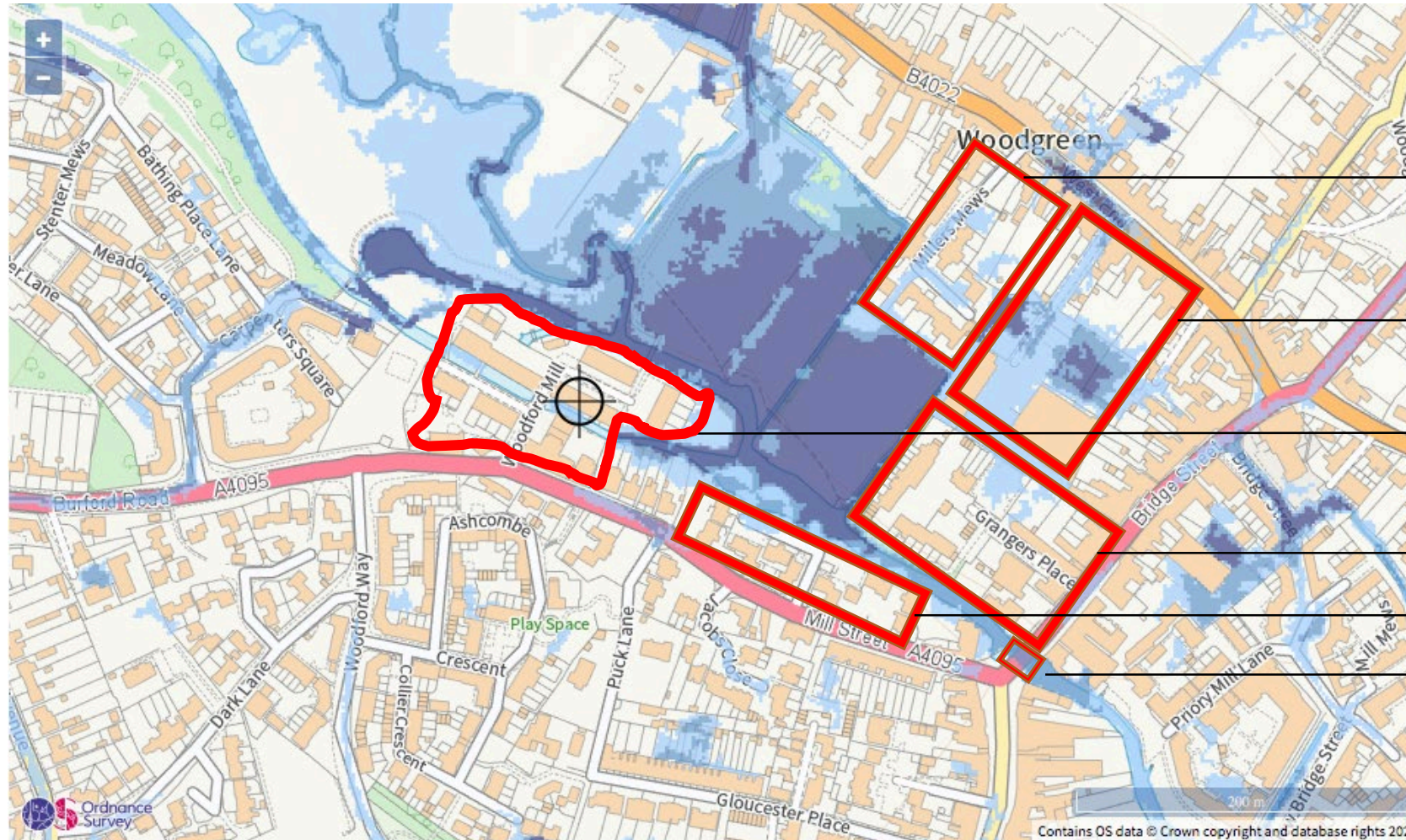
Town Bridge

Madley Brook
Langel Common Footpath

Development = Reduced Capacity



Witney Flood
Mitigation Group



Miller's Mews

West End Industrial Estate

Woodford Mill

Grangers Place

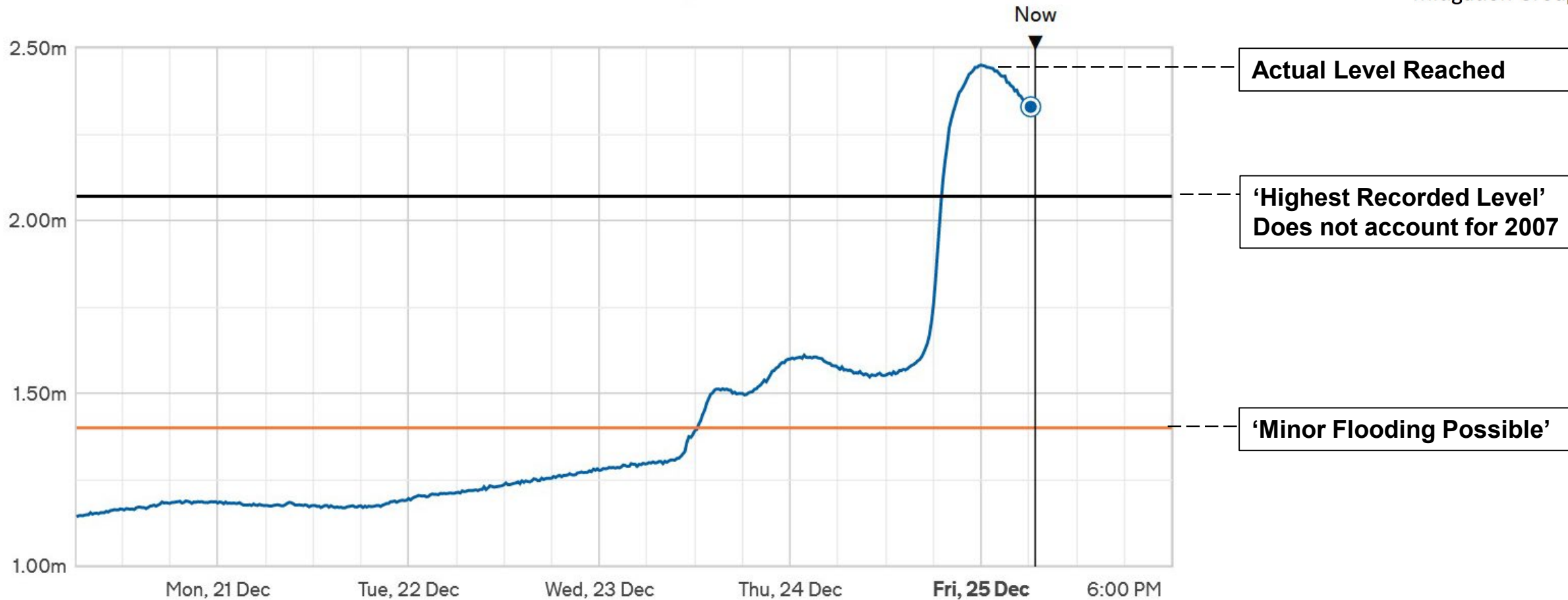
Riverside Gardens

Town Bridge

EA River Level Data – Christmas Eve 2020



Witney Flood
Mitigation Group

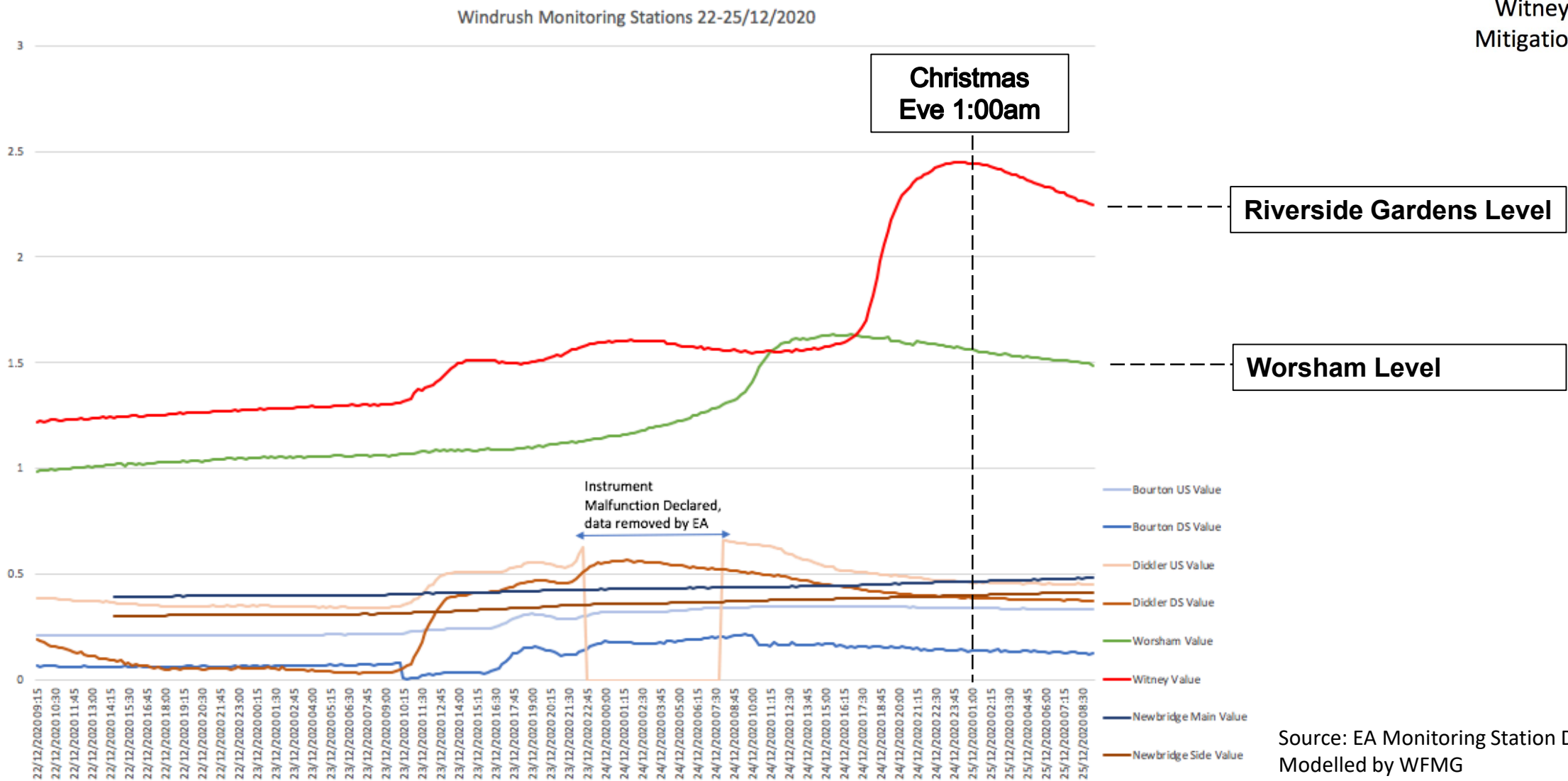


Source: EA Monitoring Station Data



Witney Flood
Mitigation Group

WFMG Independent Analysis – Dec 2020



Source: EA Monitoring Station Data
Modelled by WFMG

Dredging is Achievable



Witney Flood
Mitigation Group



**Long Reach Excavator
Working from bank**

Dredging is Achievable



Witney Flood
Mitigation Group



**Wide Track Excavator
Working in channel
With Dumper Truck**

Dredging is Achievable



Witney Flood
Mitigation Group



**Amphibious Excavator
can work afloat**

Progress With EA



Witney Flood
Mitigation Group

- **Wrote to Upper Thames Area Director at Wallingford**
- **Working with several senior staff; slow progress as if wading through treacle**
- **Site Inspections**



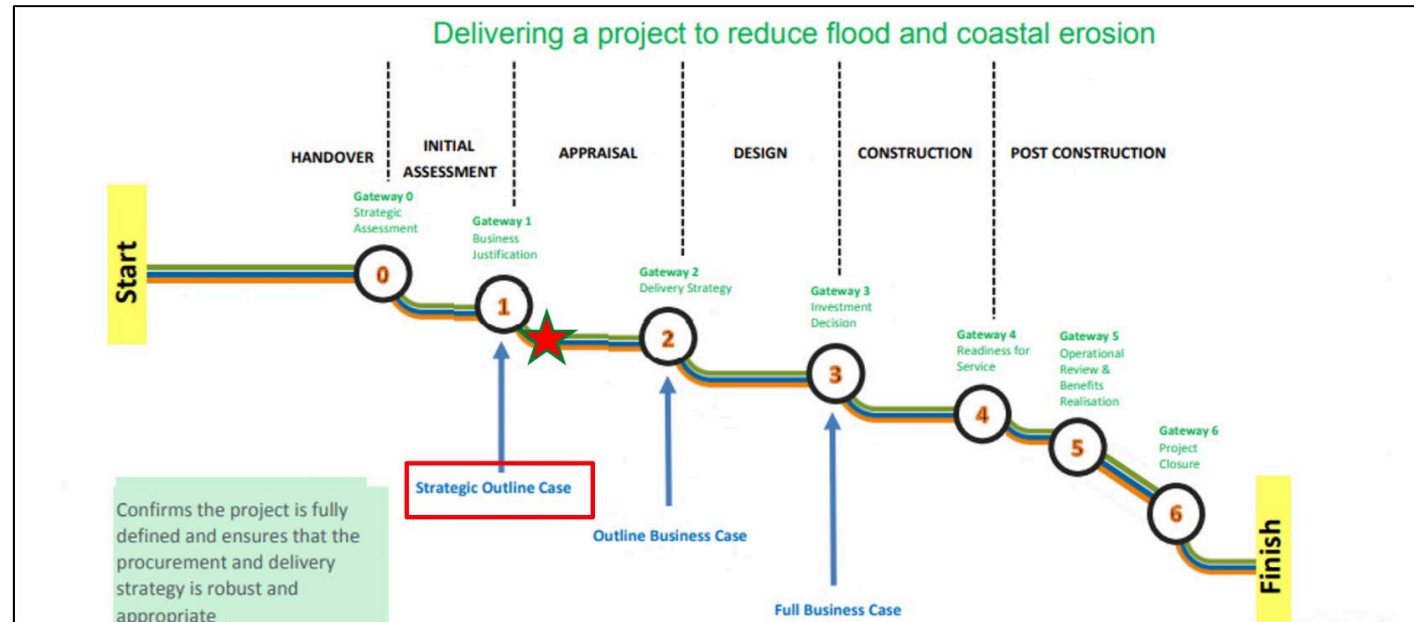
Environment
Agency

What is Witney Flood Alleviation Scheme?



Witney Flood
Mitigation Group

- Justification
- Scope
- Consultants Engaged
- Project Viability Timescale



Environment
Agency

Section 19 Flood Report

Short Term Recommendations

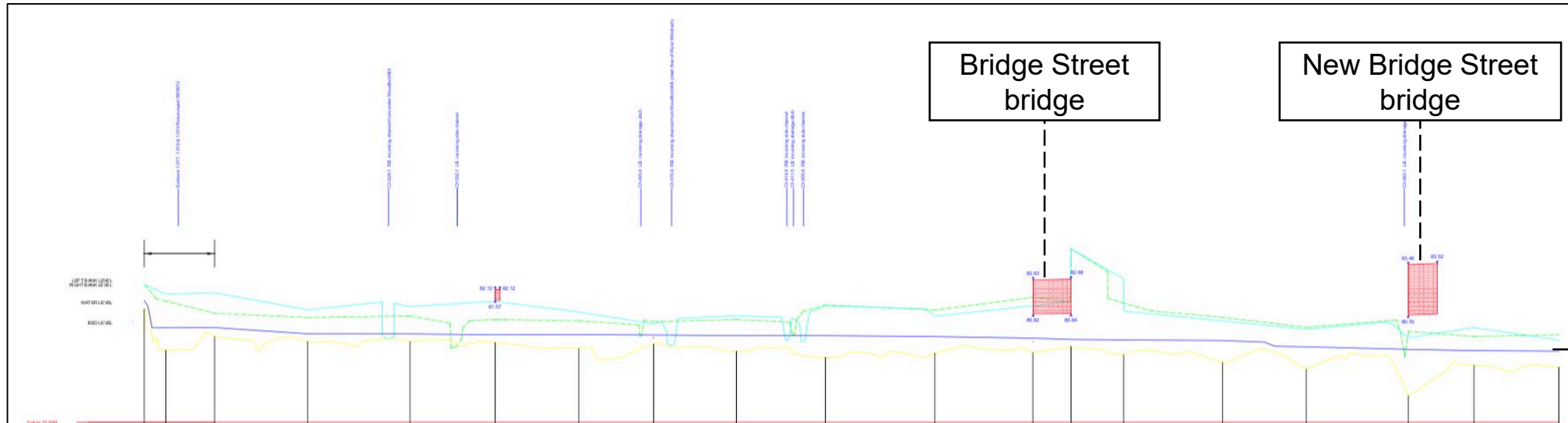


Witney Flood
Mitigation Group

Recommendations	Lead Stakeholders	Consulting stakeholders
Communicate the explanation for the previous problems with the flood warning system and explore what further improvements and enhancements could be made.	EA	WODC, LLFA and residents.
Update the 2014 model with updated level information, especially downstream of the Aquarius Bridge through to the footpath at Langel Common. Include main tributaries through Witney	EA	WODC, LLFA, WFMG
Increased EA / Riparian maintenance to be carried out along the river Windrush through and downstream of Witney. Proactive visits and encouragement to ensure riparian owners carry out their duties.	EA	Landowners, WFMG
Investigate if the river could be modified to increase flow capacity during severe conditions, especially between New Bridge Street through to the footpath in Langel Common.	EA	Landowners, LLFA and WODC.
Look at improving flows through Langel Common footpath to ensure flood plain connectivity is improved during all flood events	EA	LLFA, Landowners, WODC
Install Gauge boards from Woodford Mill through to Langel Common and set up a Flood Warden network with local volunteers to record the levels during flood events.	EA	WFMG, LLFA
Look at opportunities for flood storage and increased flood plain capacity upstream of Witney and Crawley such as nature based solutions through partnership working.	EA	Landowners, LLFA, WODC

EA River Bed Survey – 2009/2012

Need new survey to reflect current state



EA Maintenance 2022



Witney Flood
Mitigation Group

Month	Maintenance Unit	AIMS ID	AIMS Asset Type	Location (AIMS reach)	Maintenance Standard	Length (m)
Jun-22	Madley Brook WITNEY	358060	Open Channel	Madley Brook from Meadow View culvert to Windrush (East Branch)	W2A, M2, TB3, WD2, OBS	251.66
Jun-22	Madley Brook WITNEY	358061	Open Channel	Madley Brook from TF Smith culvert to Meadow View culvert	W2A, M2, TB3, WD2, OBS	16.51
Jun-22	Madley Brook WITNEY	377883	Open Channel	Madley Brook flood relief channel from Church Lane to Madley Brook main channel D/S TF Smith culvert	W2A, M2, TB3, WD2, OBS	12.22
Jun-22	Madley Brook WITNEY	377884	Open Channel	Madley Brook main channel immediately D/S TF Smith culvert to confluence with Madley Brook flood relief channel	W2A, M2, TB3, WD2, OBS	7.93
Jun-22	Madley Brook WITNEY	377885	Open Channel	Madley Brook from top @ Jubilee Way to TF Smith culvert under garages D/S Oxford Hill	W2A, M2, TB3, WD2, OBS	1646.62
Jun-22	Emmas Dyke WITNEY	358048	Open Channel	Emma's Dyke from Queen Emma's Dyke to Windrush (West Branch)	W1, M3, TB3, WD1, OBS	1670.72
Jun-22	Windrush (East Branch) WITNEY	358182	Open Channel	Windrush (East Branch) from Bridge Street to A40	W2A, M2, TB3, WD2, OBS	2093.57
Aug-22	Windrush (West Branch) WITNEY	358104	Open Channel	Windrush (West Branch) from Back Lane Ducklington to nr. A415 Standlake Road	W2, M2, TB3, WD2, OBS	1972.92
Aug-22	Windrush (West Branch) WITNEY	358105	Open Channel	Windrush (West Branch) from A40 to Ducklington Back Lane	W2, M2, TB3, WD2, OBS	1511.87
Aug-22	Windrush (West Branch) WITNEY	358106	Open Channel	Windrush (West Branch) from East Branch/West Branch bifurcation nr. Witan Way to Farm Mill Lane/Bishops Farm Mill	W2, M2, TB3, WD2, OBS	807.83
Aug-22	Windrush (West Branch) WITNEY	358123	Open Channel	Windrush (West Branch) from Farm Mill Lane/Bishops Farm Mill to A40	W2, M2, TB3, WD2, OBS	432.17
Aug-22	Windrush (West Branch) WITNEY	377986	Open Channel	Windrush (West Branch) from A415 Standlake Rd. to Hardwick	W2, M2, TB3, WD2, OBS	1489.31
Aug-22	Windrush (West Branch) WITNEY	377987	Open Channel	Windrush (West Branch) from Hardwick to B4449	W2, M2, TB3, WD2, OBS	602.95
Aug-22	Windrush (Main) WITNEY	378125	Open Channel	Windrush (Main) from New Mill to Bridge Street	TB3, WD1, OBS	2031.55
Sep-22	Colwell Brook WITNEY	378097	Open Channel	Colwell Brook from Gregory Place to confluence with Emmas Dyke	W2A, TB3, WD2, OBS	2286.48
Nov-22	Hailey Road Drain WITNEY	358059	Open Channel	Hailey Road Drain from Crawley Rd to Windrush opposite Woodford Mill	W1, M3, TB3, WD2, OBS	199.65
Nov-22	Hailey Road Drain WITNEY	377882	Open Channel	Hailey Road Drain from top to Hailey Rd trash screen	W1, M3, TB3, WD2, OBS	108.69

Delayed and
Incomplete



Witney Flood
Mitigation Group

Witney Bridge – Owned by OCC

- Rebuilt 1924
- Critical Infrastructure
- Redesign?
- Compared to New Bridge Street bridge



Progress With WODC



Witney Flood
Mitigation Group

- **Active at WODC Environment Scrutiny Committee Meetings**
- **Supported the Section 19 Flood Report**
- **Assessment of planned maintenance**
- **Already met post-election WODC councillors**



WEST OXFORDSHIRE
DISTRICT COUNCIL



Witney Flood
Mitigation Group

Vulnerable Communities at Risk

- **Riverside Gardens**
- **Council Housing at Old Courthouse, Bridge Street**
- **Vulnerable special needs families, e.g. Woodford Mill**
- **Numerous elderly homeowners in private properties**

Questions?

- **Do you want to find out more?**
- **How can you support our group to achieve more?**
- **Others at risk outside Witney?**

- **Any questions from You?**



Witney Flood
Mitigation Group